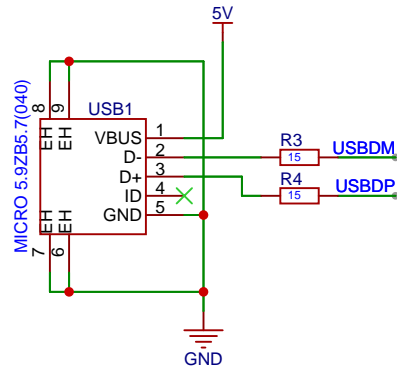


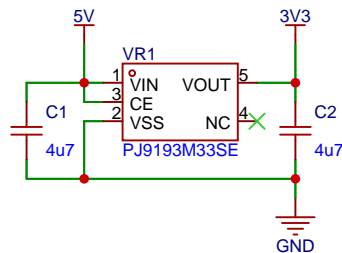
USB



Known problems:

- Addon header mirrored. No, really.
Workaround: Cut traces for GP1 and GP2, solder jumper wires between mirrored pins. Physically remove pins 5&6 from header.

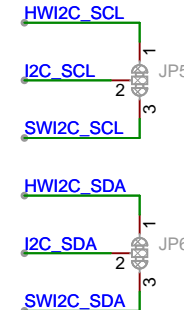
3V3



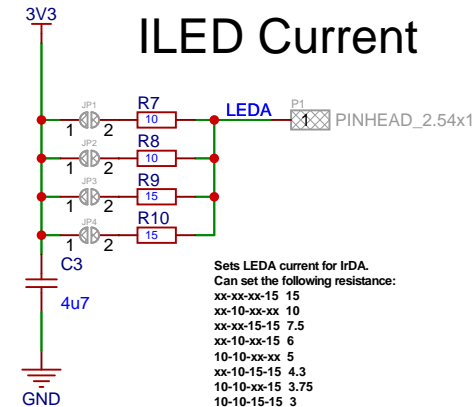
Debug and I2C peripherals share pins on the MCU. There is no remap for I2C.

This option allows reconfiguring of I2C I/O to use either hardware or software I2C.

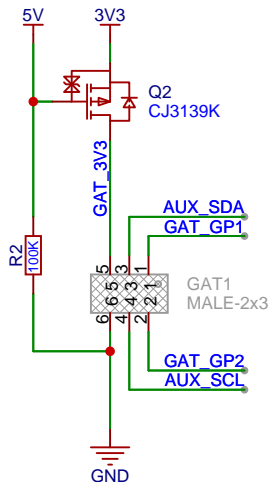
I2C Pin Select



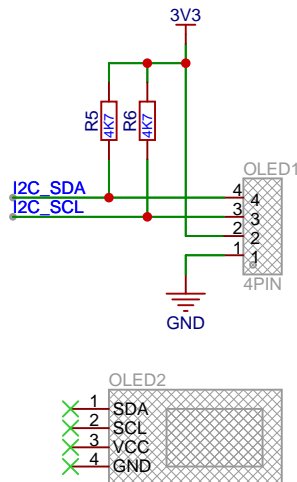
ILED Current



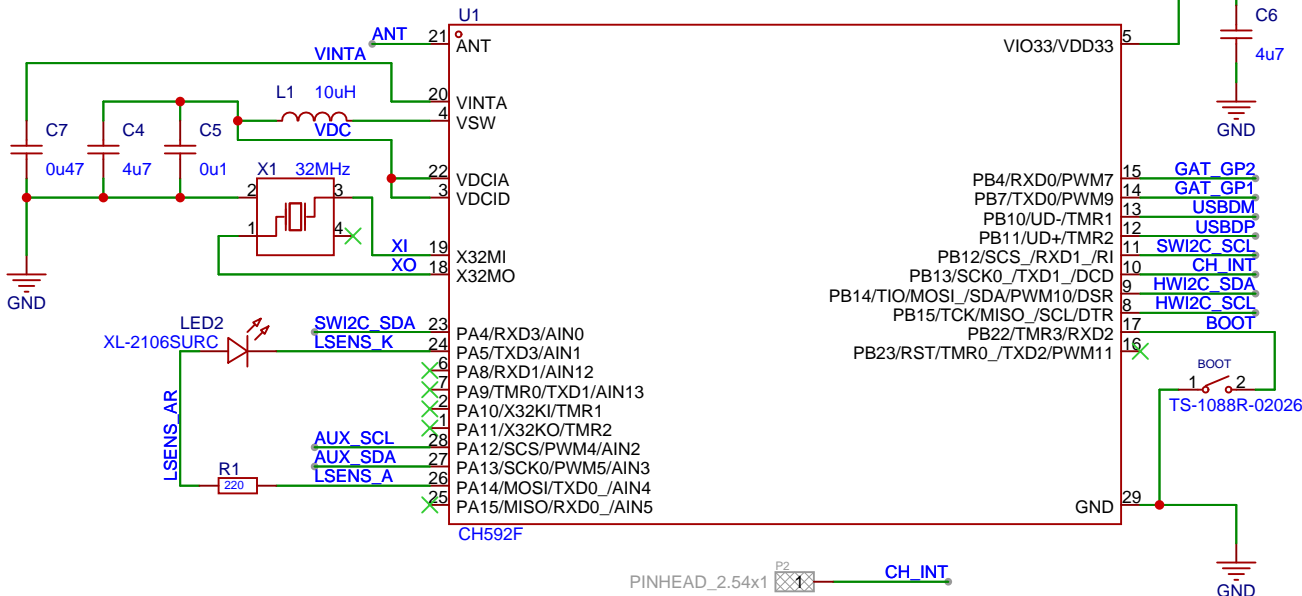
GAT



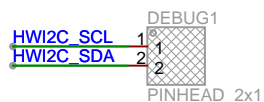
Board to Board



MCU



Debug



Schematic

GAT Top Board

Update Date 2024-10-27

Create Date 2024-10-07

Part Number tC-SC8-01

Page

bottom_board_schematic

Drawn

true

Reviewed

true's GAT Nametag - SUPERCON 8 EDITION

VER

REV3

SIZE

A4

PAGE

1

OF

1

schematics, instructions, firmware updates
<https://basic.truecontrol.org>

trueControl